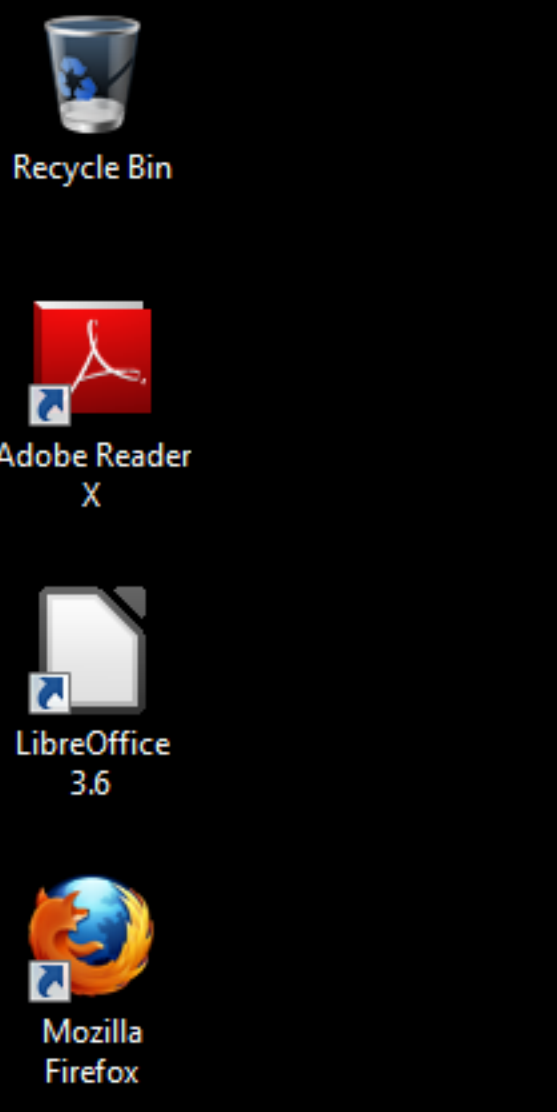


How to logon mait.local or dragon.local as a non administrator

These slides show how to logon to mait.local or dragon.local without using Remote Desktop. The class servers do not allow non-administratiou accounts to logon using Remote Desktop. This is also good for connecting your client system to the servers to install programs.

Preuss

9/24/2012



This example is using a Windows 7 client that is not a member of the domain. All the procedures are the same for clients that are a member of the domain.



Recycle Bin



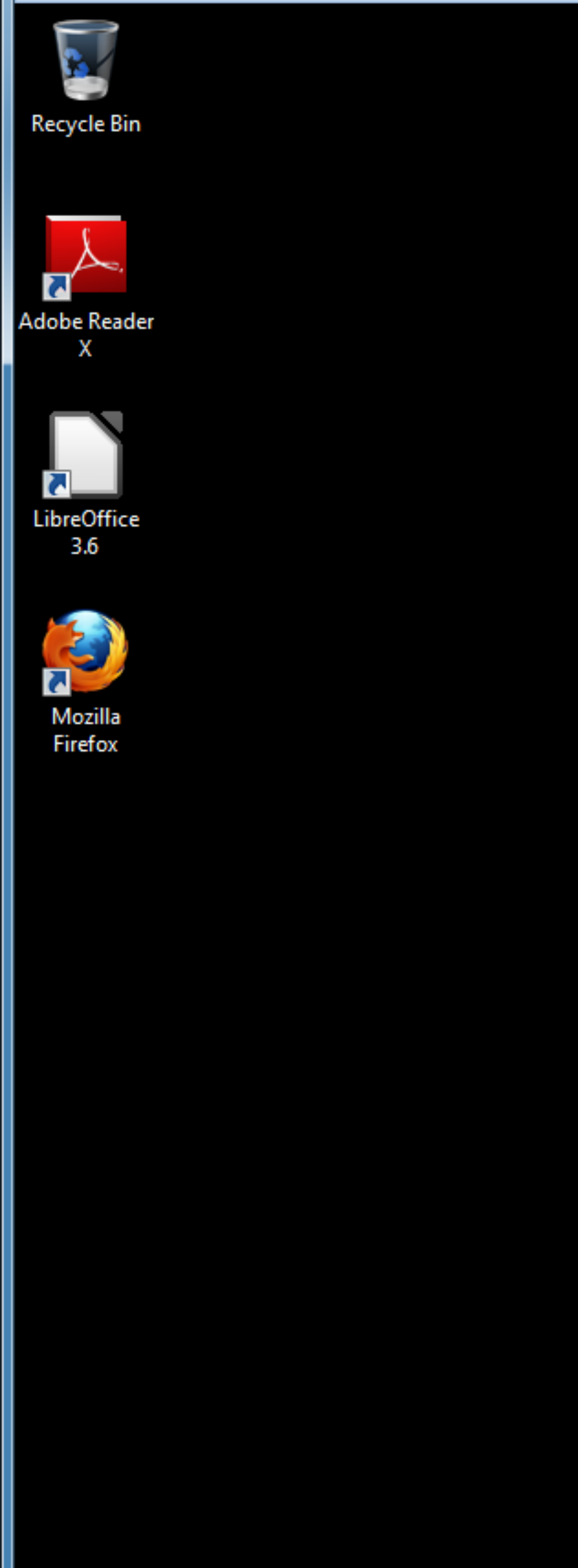
Adobe Reader
X

- Mozilla Firefox
- Notepad
- Getting Started
- Connect to a Projector
- Calculator
- Sticky Notes
- LibreOffice Writer
- Remote Desktop Connection
- Snipping Tool
- Paint
- XPS Viewer
- Windows Fax and Scan
- Magnifier
- LibreOffice 3.6
- Computer Management
- Cisco AnyConnect VPN Client

- preuss
- Documents
- Pictures
- Music
- Videos
- Downloads
- Games
- Computer
- Network
- Control Panel
- Devices and P
- Default Progr
- Administrativ
- Help and Support
- Run...
- Shut down

- Open
- Manage
- Map network drive...
- Disconnect network drive...
- Show on Desktop
- Rename
- Properties

This menu comes from right clicking on the Computer menu item. Select Map network drive option.



Recycle Bin

Adobe Reader X

LibreOffice 3.6

Mozilla Firefox

Map Network Drive

What network folder would you like to map?

Specify the drive letter for the connection and the folder that you want to connect to:

Drive:

Folder:

Example: \\server\share

Reconnect at logon

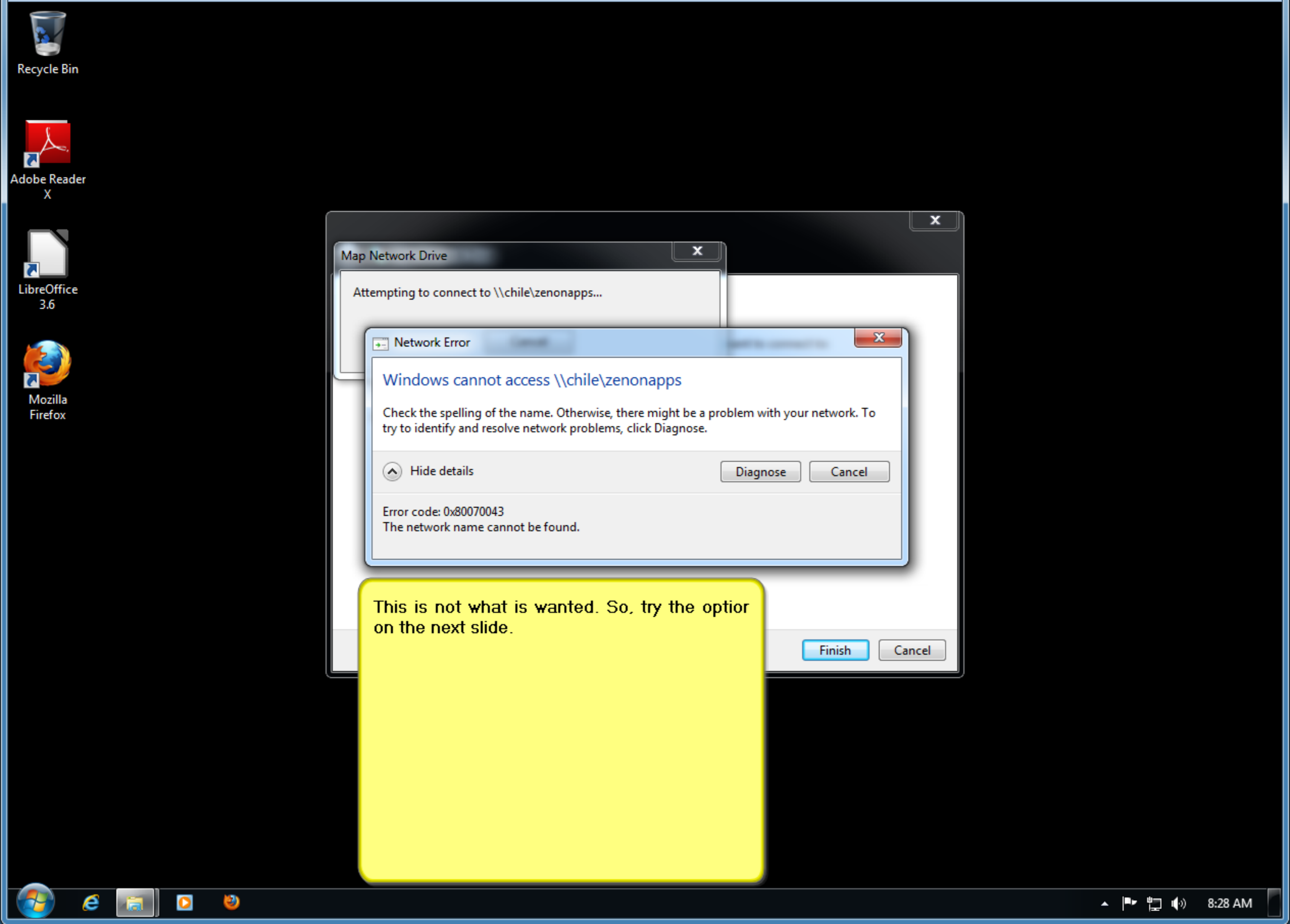
Connect using different credentials

[Connect to a Web site that you can use to store your documents and pictures.](#)

You may choose any letter of the alphabe that makes you happy for the drive letter. Naturally, you will not choose C: or D because those letters make you unhappy.

Put the unc path in the folder box. UNC format is \\server\share. In this example, chile is the server and zenonapps is the share Your share is your organizational unit name ir place of zenon.

Uncheck the reconnect at logon, it makes life a bit simplier.



Map Network Drive

Attempting to connect to \\chile\zenonapps...

Network Error

Windows cannot access \\chile\zenonapps

Check the spelling of the name. Otherwise, there might be a problem with your network. To try to identify and resolve network problems, click Diagnose.

Hide details Diagnose Cancel

Error code: 0x80070043
The network name cannot be found.

Finish Cancel

This is not what is wanted. So, try the option on the next slide.



Recycle Bin



Adobe Reader X



LibreOffice 3.6



Mozilla Firefox

Map Network Drive

What network folder would you like to map?

Specify the drive letter for the connection and the folder that you want to connect to:

Drive: P: [v]

Folder: \\chile.mait.local\zenonapps [v] Browse...

Example: \\server\share

Reconnect at logon

Connect using different credentials

[Connect to a Web site that you can use to store your documents and pictures.](#)

Finish Cancel

As the last slide showed, the server chile could not be found. This slide replaces chile with the FQDN of chile. It can work.



Recycle Bin



Adobe Reader
X



LibreOffice
3.6



Mozilla
Firefox

Map Network Drive

Attempting to connect to \\chile.mait.local\zenonapps...

Network Error

Windows cannot access \\chile.mait.local\zenonapps

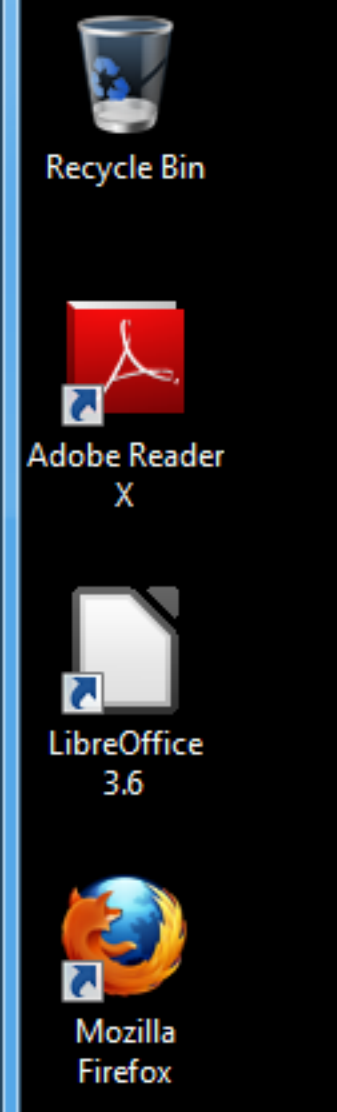
Check the spelling of the name. Otherwise, there might be a problem with your network. To try to identify and resolve network problems, click Diagnose.

Hide details Diagnose Cancel

Error code: 0x80070043
The network name cannot be found.

Finish Cancel

Our next option is on the next slide.



Windows Security

Enter Network Password
Enter your password to connect to: 134.29.228.104

Domain: TEMPLATE-WIN7
 Remember my credentials

OK Cancel

...t to connect to:

Browse...

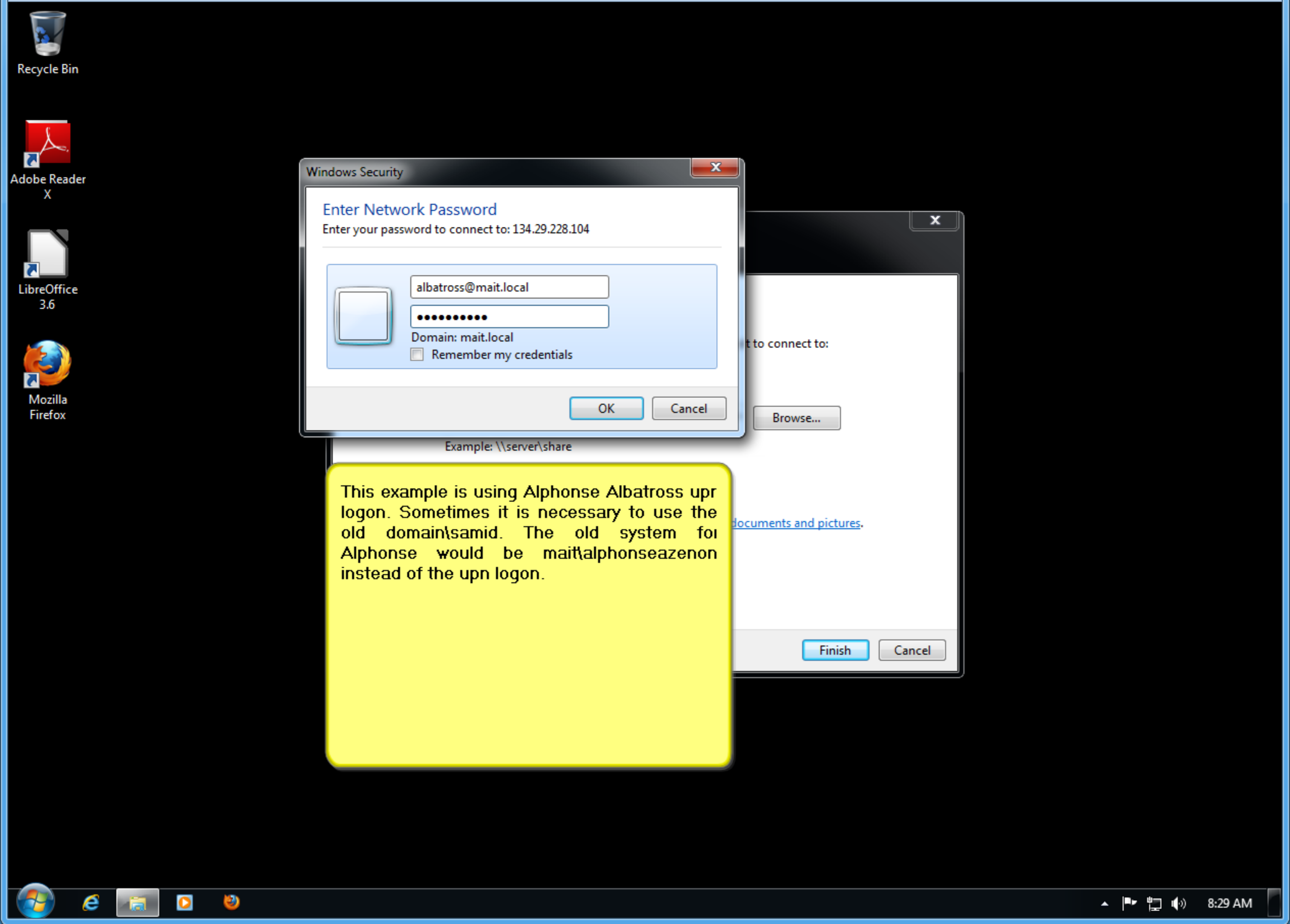
Example: \\server\share

Reconnect at logon
 Connect using different credentials

[Connect to a Web site that you can use to store your documents and pictures.](#)

Finish Cancel

This screen is asking for a valid logon on the server or the location that hosts the share. In this example, any member of the people group in your organization unit will work.



Windows Security

Enter Network Password

Enter your password to connect to: 134.29.228.104

Domain: mait.local

Remember my credentials

OK Cancel

This example is using Alphonse Albatross upr logon. Sometimes it is necessary to use the old domain\samid. The old system for Alphonse would be mait\alphonseazenon instead of the upn logon.

...t to connect to:

Browse...

documents and pictures.

Finish Cancel



Recycle Bin



Adobe Reader X



LibreOffice 3.6



Mozilla Firefox

Computer > zenonapps (\\134.29.228.104) (P:) >

Search zenonapps (\\134.29.228.104) (...)

Organize Burn New folder

| Name | Date modified | Type | Size |
|--------|-------------------|-------------|------|
| minime | 9/12/2012 3:21 PM | File folder | |

The client is successfully connected to the share.

1 item Offline status: Online Offline availability: Not available



Recycle



Adobe R
X



LibreOf
3.6



Mozil
Firefo

```
C:\Windows\system32\cmd.exe
Microsoft Windows [Version 6.1.7601]
Copyright (c) 2009 Microsoft Corporation. All rights reserved.

C:\Users\preuss>
```

This is mapping a share using the command line. Really it is the same process as the previous slides.



Recycle Bin C:\Windows\system32\cmd.exe



Adobe Reader X



LibreOffice 3.6



Mozilla Firefox

```
C:\Users\preuss>net use p: \\chile\zenonapps
System error 67 has occurred.
The network name cannot be found.

C:\Users\preuss>net use p: \\chile.mait.local\zenonapps
System error 67 has occurred.
The network name cannot be found.

C:\Users\preuss>net use p: \\134.29.228.104\zenonapps
The command completed successfully.

C:\Users\preuss>net use p: /delete
p: was deleted successfully.

C:\Users\preuss>
```

This slide shows three different ways to connect to the server. OK, it is the same way! show in the graphical section. The last command disconnects the share from the client.



C:\